



Why manufacturer  
components in TopSolid  
are **smarter** than  
elsewhere and what  
Cadenas can do about it



## TopSolid is ...

- Integrated CAD and CAM solution
- 100% PDM-based
- Industry-oriented
  - Mechanical engineering
  - Steel construction
  - Mold/tool construction
  - Sheet metal processing
  - Interior design/wood





## Manufacturer parts should

- Save work
- Avoid mistakes
- Bundling knowledge

## Therefore, they must ...

- are gladly used
- be easy to use



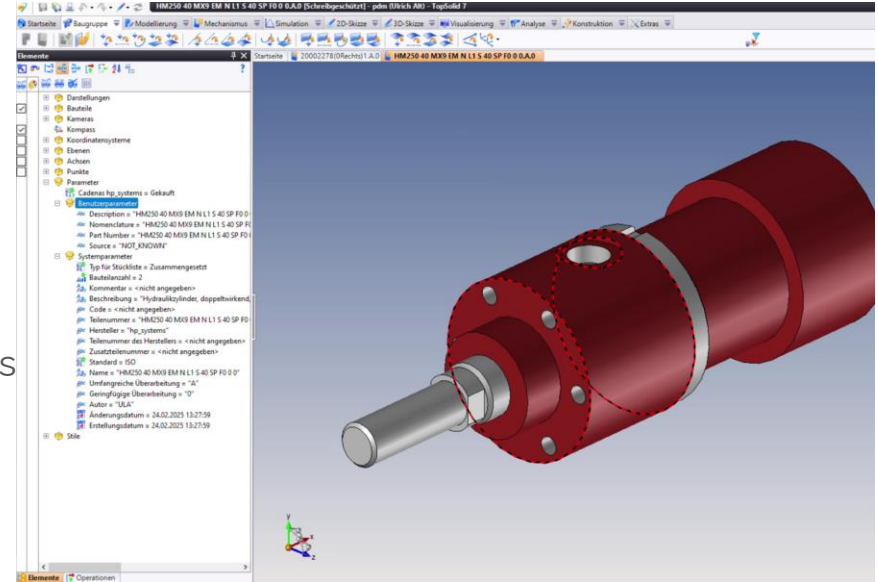


## **Easy to use due to:**

- Completeness
- Interchangeability
- Assistants
- Processes
- Mobility

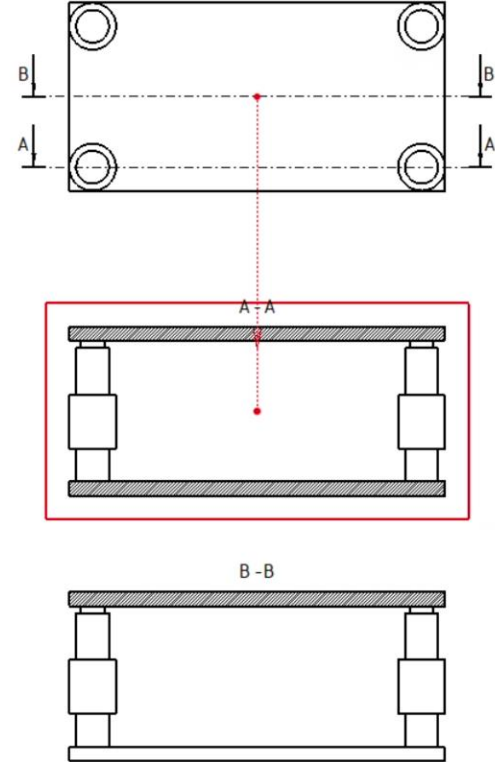
## Parts should be complete:

- Parts list information
  - Numbers, designations, manufacturers, variants
- Material, coating, surface
  - Correct weight, even of assemblies
  - Rendering
  - VR



## Parts should be complete:

- Symmetries
  - No unnecessary mirror parts
- Indivisibility
  - Correct 2D drawings





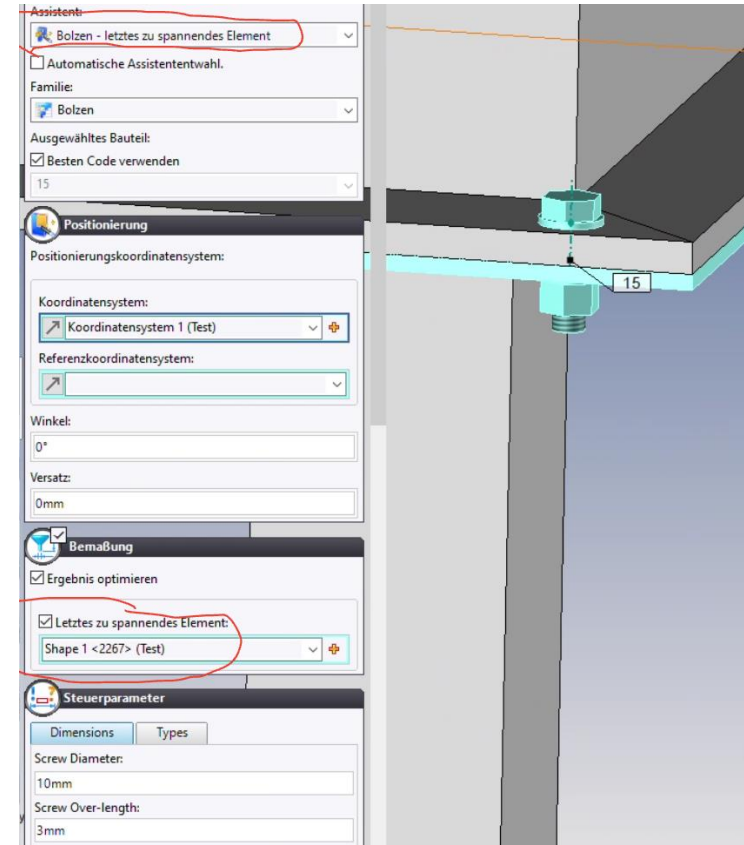
## Parts are interchangeable ...

- according to their  
**constructive function**
  - Screw <-> screw, motor <-> motor
- with regard to positioning and processes
- Cross-manufacturer and cross-catalog

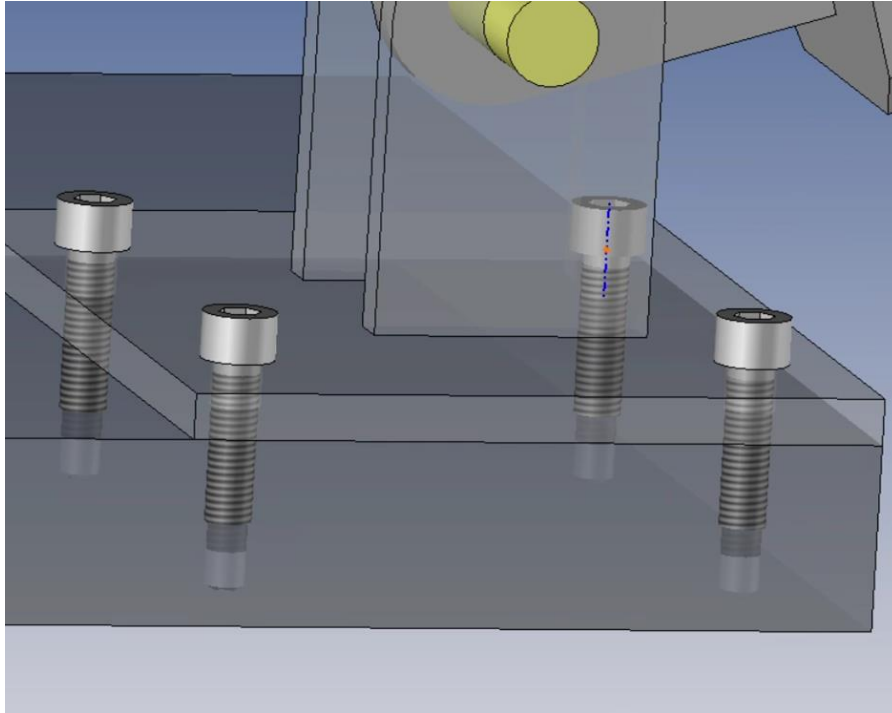


## Assistants are ...

- Predefined types of positioning for **entire classes** of parts
- Filters and aids for dimensioning
  - Screw through parts
  - Foot/roller at the end of profile
  - Connector between profiles
  - Assembly Kits





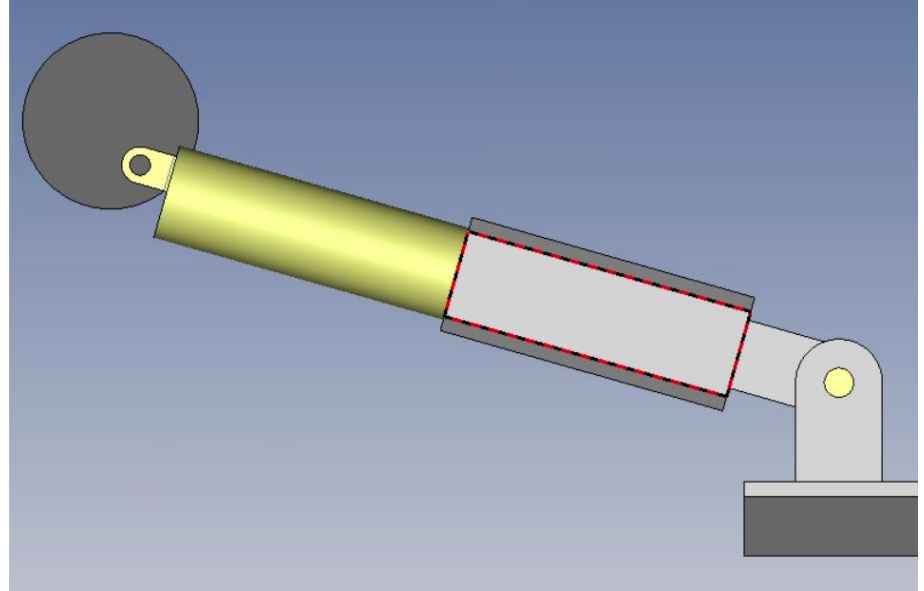


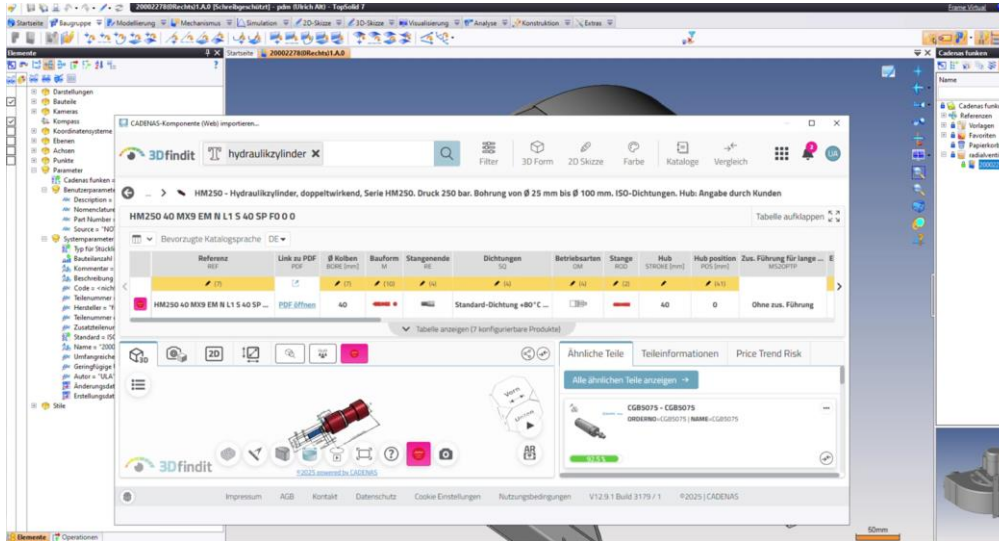
## Processes ...

- edit other parts  
**associatively**
  - Screw drills panels
  - Profile makes notch
- Much more than "trigger bodies"
  - Threaded hole for screw
  - Fits, tolerances
- also affect subcomponents

## Movable assemblies ...

- facilitate installation
- are intuitive
- avoid mistakes





## Cadenas Partsolutions

- integrated in TopSolid
  - no plugins, no downloads, no installation
  - Search and find parts
  - Parts are movable



## Dreams for the future

- "Labeling" the parts according to function
- Mobility
- Stable anchor geometries for classes of components
  - for positioning
  - and processes
- Parts have "real" processes
  - Holes, pockets
  - adjustable game ...





WeSt GmbH

## Want to know more?

- Watch TopSolid live here at the stand
- Subscribe to YouTube channel
  - [youtube.com/@WeStGmbHTopSolid](https://youtube.com/@WeStGmbHTopSolid)
- [west-gmbh.de](https://west-gmbh.de)



WeSt GmbH



Ulrich Alt,  
Managing Director  
+49-6897-92484-13  
ualt@west-gmbh.de



Julia Eisenberg,  
Business Development Manager  
+49-6897-92484-15  
jeisenberg@west-gmbh.de



WeSt GmbH

