



From 3D scanner to 3D search in a matter of seconds

4CAD solution s.r.o. (Czech Republic)

Agenda

1) About the Company

4) Current status

2) How 3D scanner work?

5) Solution proposal

3) Problem description

6) Live demonstration

About the Company

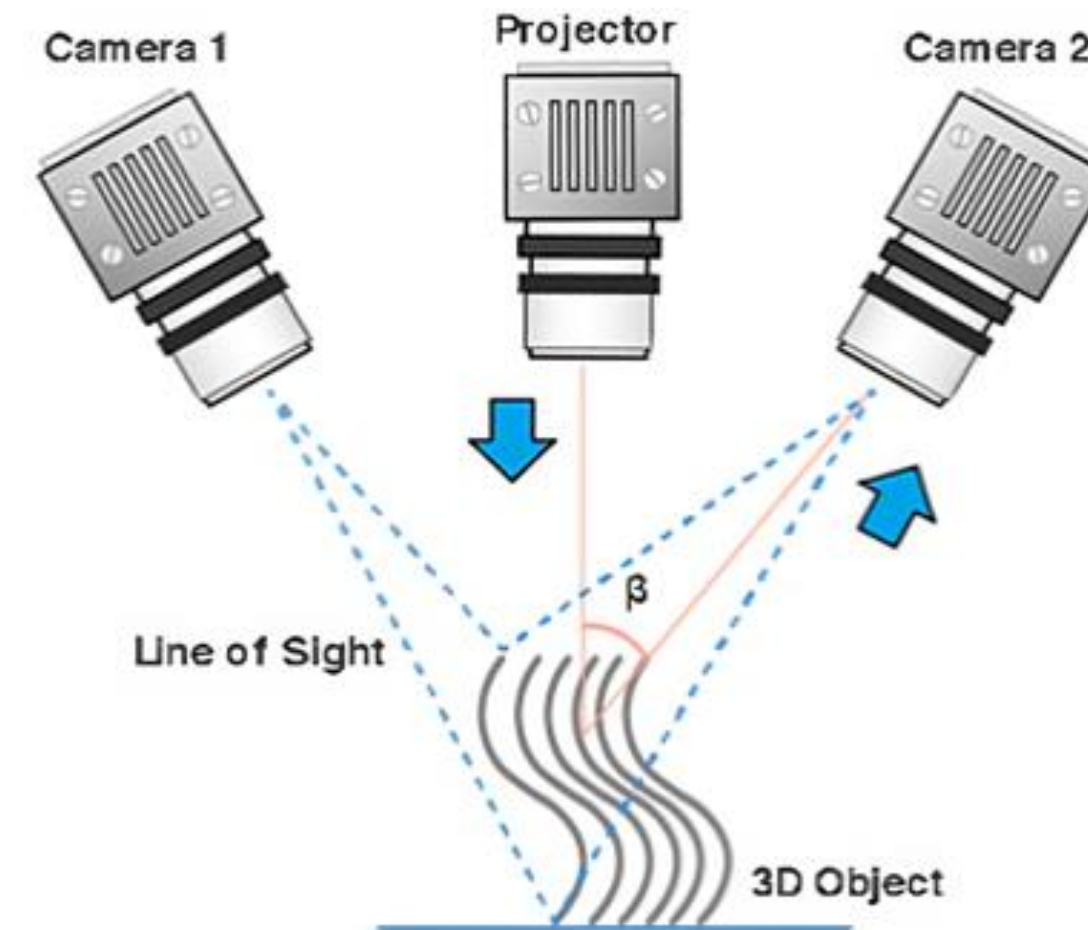
- **We started in 2023**
- **3 employees**
- **Design automation**
- **3D scanning**
- **Reverse engineering**
- **SolidWorks support**

Presented by: Lukáš Tisoň
Owner and main coffee maker of the company



How 3D scanner work?

- **Optical method (non-contact)**
- **Active light source**
- **Precision industrial cameras**
- **Triangulation of measured points**



Problem

Description

Czech company from the military sector

Parts cannot be marked and are difficult to identify during the manufacturing and assembly process



1.

An external design company will design the parts

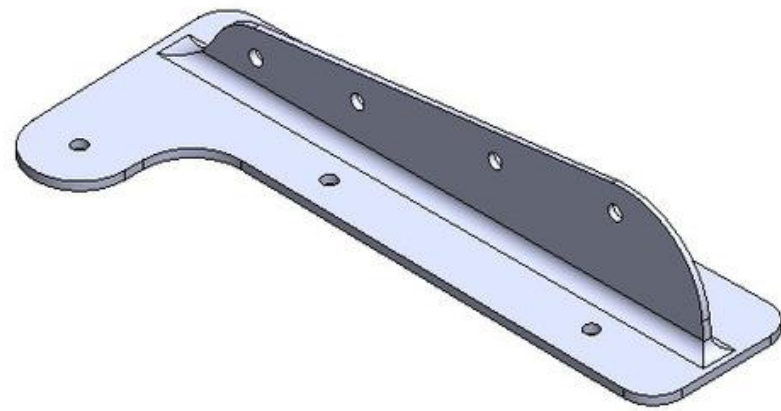
2.

Production takes place in the home factory

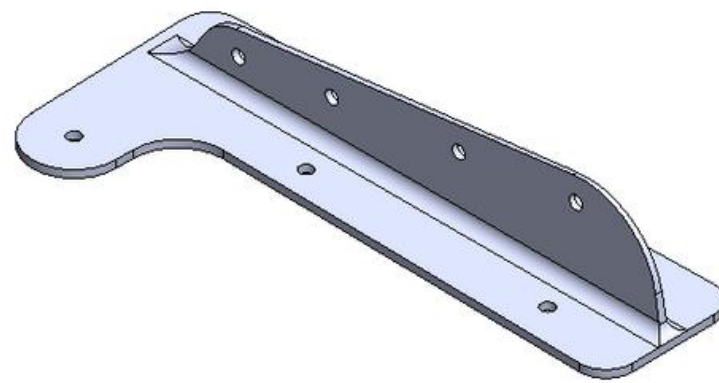
3.

Parts must be correctly identified

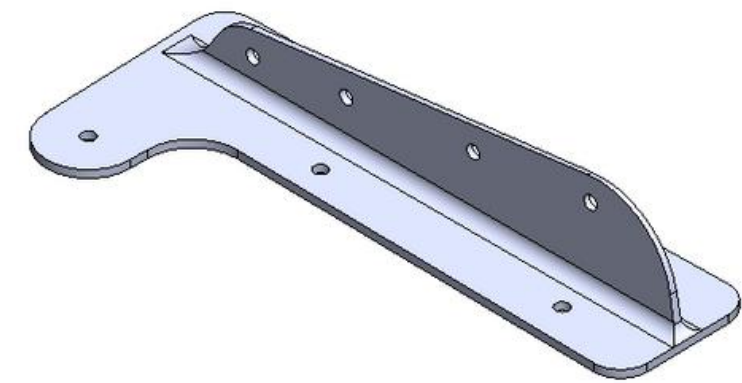
Why is identification so difficult?



Size of the holes



Angle of the walls



Complete length

Current status

**How is the company
currently dealing with
this problem?**

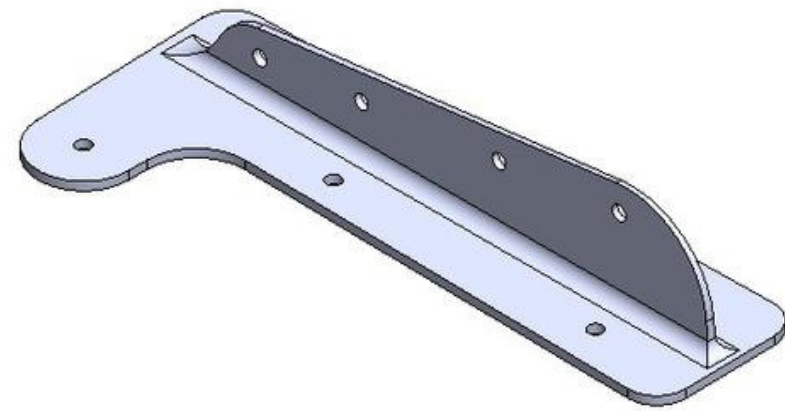
1

**Each part separately is
compared to a 1 to 1 scale
drawing to find the correct part
marking and identification.**

2

**The company currently has
approximately 15,000 parts in
database.**

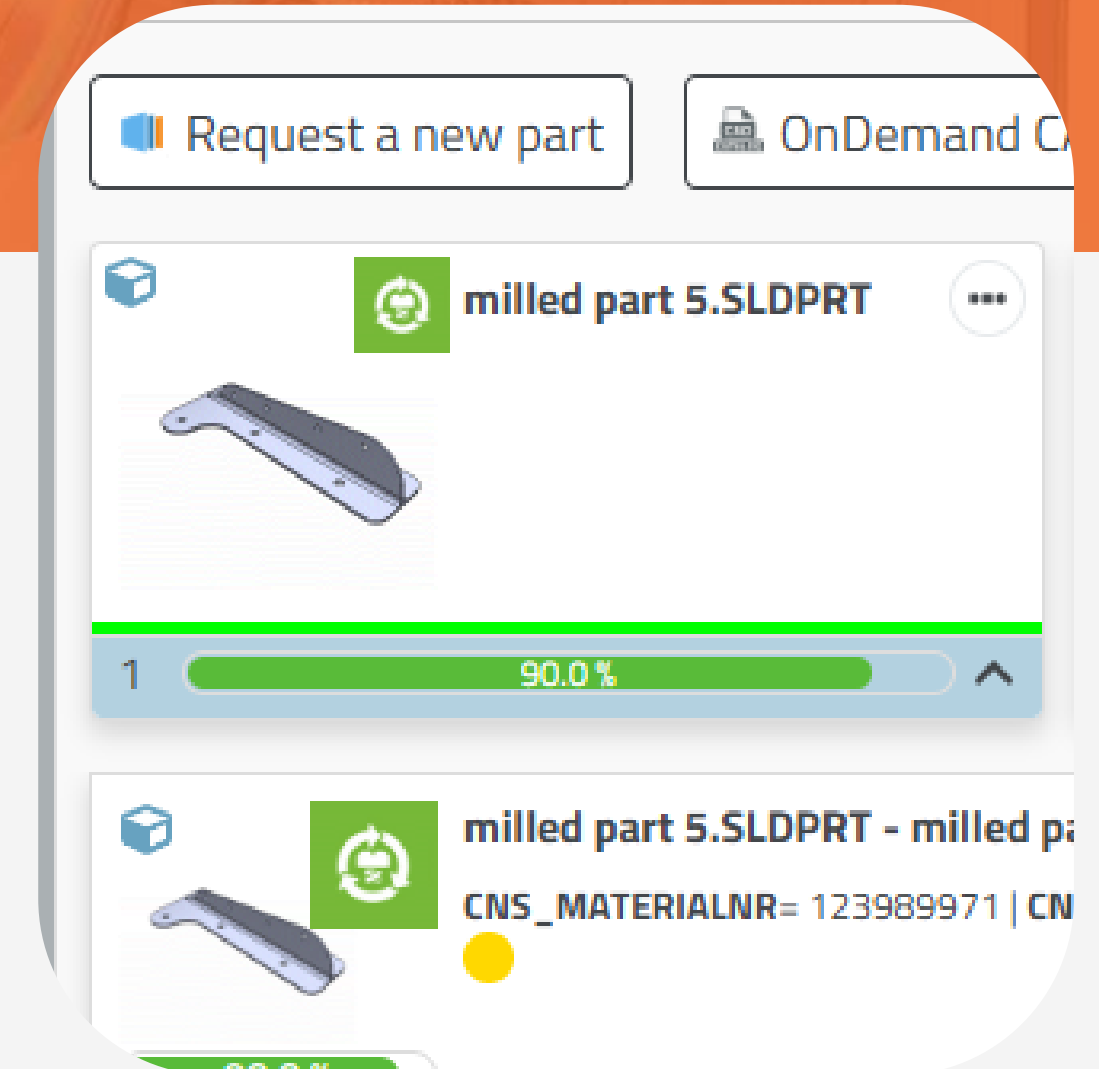
Solution proposal



**Selecting the part
for identification**



**We capture an accurate
3D scan of the object**



**Finding the right part in
3D Findit**

Partners of this project



SHINING 3D®

**Development of Shining 3D
metrology scanners**



CADENAS

Developer of 3DFindit

ADMASYS

ADDITIVE MANUFACTURING SYSTEMS

**Supplier of 3D scanners in the
Czech Republic**



Completion and solution idea



Live demonstration

Let's keep in touch

Lukáš Tisoň CEO

 +420 735 084 982

 Lukas.tison@4-cad.cz

