



eCATALOG SOLUTIONS | PART COMMUNITY

DIE VERTIKALEN MARKTPLÄTZE

ERSCHLIESSEN VON NEUEN KUNDENPOTENTIALEN

CADENAS Technologies AG

CADENAS Gruppe

Company&Logo



Founded 1992
100 % privately owned
Process chains
(CADENAS span. chains)

About me

Stefan Waldner

Employees



~ 300 worldwide

Markets



Growth > 20 %
~ 350,000 licenses and > 500 catalogs

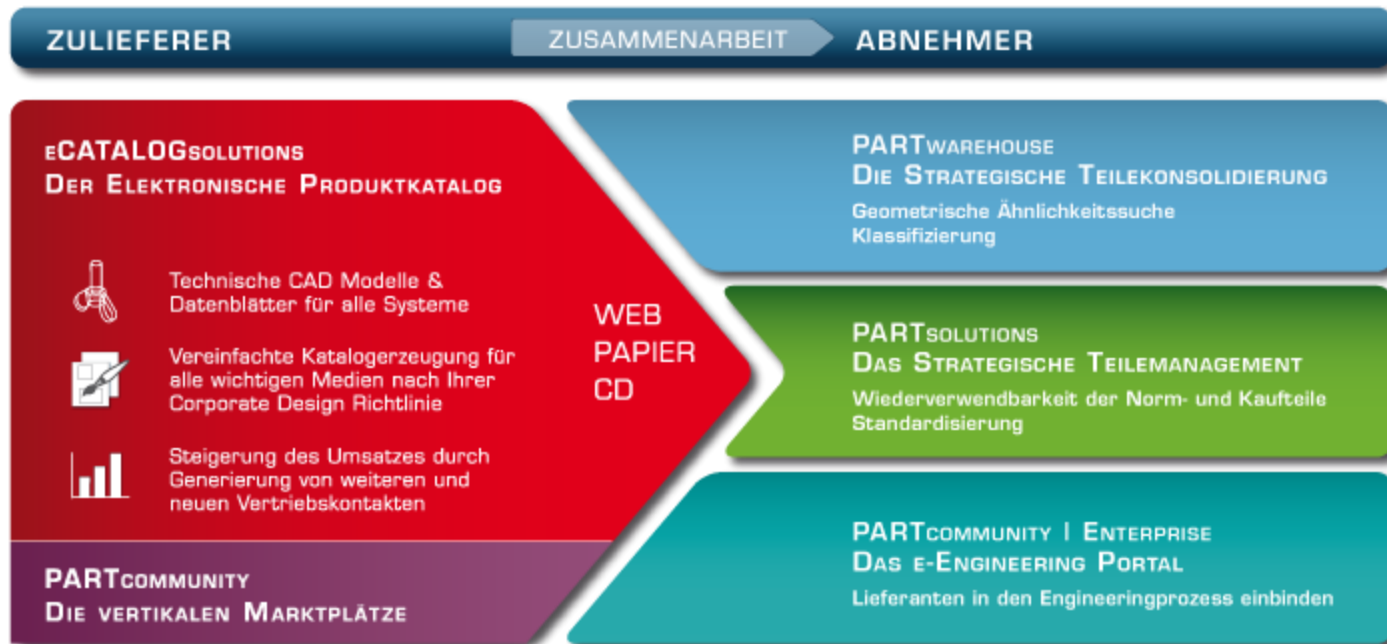




The CADENAS product portfolio

eCATALOG SOLUTIONS | PART COMMUNITY

DIE VERTIKALEN
MARKTPLÄTZE





- **PARTcommunity seamless**
- **Plugin-free page**
- **Combination fulltext- and variable search**
- **Portal management**
- **PARTcommunity 2.x advancements**
- **Outlook**



- **Many manufacturers currently use deeplinks to link CAD models on the PARTcommunity site to their own homepage or webshop**
- **The PARTcommunity portal opens in a new browser window, the user recognizes that he is leaving the website of the manufacturer**
- **Often double registration is necessary**
- **With PARTcommunity seamless you can integrate the corresponding product with a 3D preview via a deeplink in the manufacturers site, for instance in an IFrame**
- **This way the user gets the impression that he is on the same site**



- **PARTcommunity seamless is based on the existing Deeplink Syntax, only one downside of an existing PARTcommunity Portal is called up**

- **Besides the deeplink the following parameters can be handed over:**
 - Email address of the user
 - CAD format
 - Predefined layout

- **Ordering is currently only possible via email**

- **Registration is not necessary, a user account is automatically created with an email address, but without the address data.**

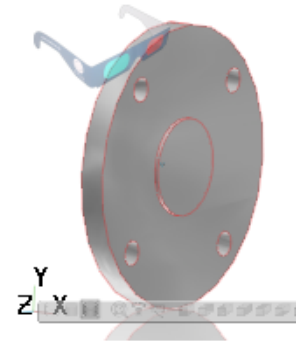


PARTcommunity seamless Layout

E-Mail Adresse:

Format Auswahl: ▼

Voransicht für Flansch DIN 2527 T 65 ND 6



Flansch DIN 2527 T 65 ND 6

Name	Beschreibung	Wert
IDNR	Identifikationsnummer	
NW	Nennweite	65
D	Flanschaußendurchmesser	160.000 mm
FORM	FORM	<input type="text" value="T"/> ▼
B	Flanschdicke	14.000 mm
K	Lochkreisdurchmesser	130.000 mm
D9	Durchmesser max.	55.000 mm
N	Schraubenanzahl	4.000
GEWINDE	Nenndurchmesser der Schraube metrisch	12.000 mm
D2	Durchmesser für Schrauben	14.000 mm
GEWB	Gewicht Form B (7.85 Kg/dm³)	2.440 kg
GEWT	Gewicht Form T (7.85 Kg/dm³)	2.480 kg



E-Mail Adresse:

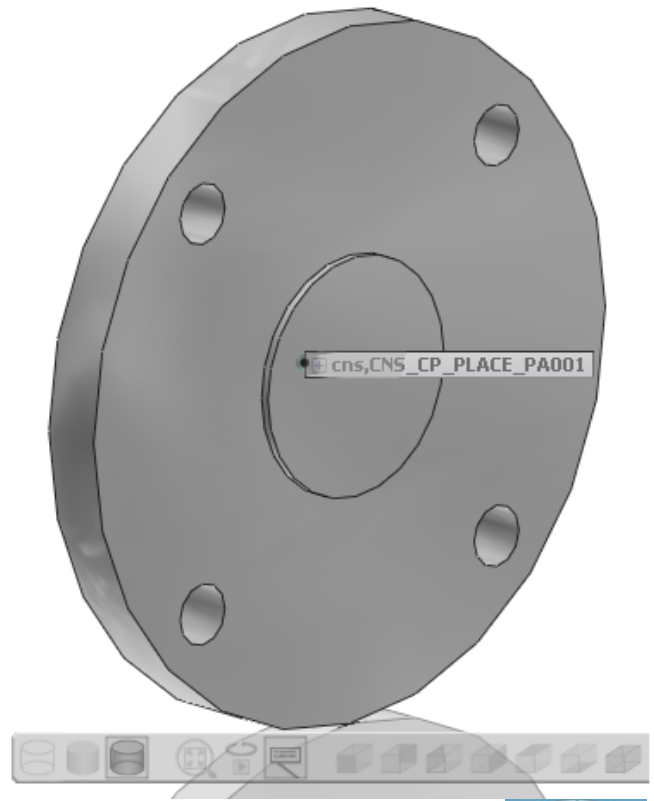
Format Auswahl: ▼



Flansch DIN 2527 T 65 ND 6

Name	Beschreibung	Wert
IDNR	Identifikationsnummer	
NW	Nennweite	65
D	Flanschaußendurchmesser	160.000 mm
FORM	FORM	T ▼
B	Flanschdicke	14.000 mm
K	Lochkreisdurchmesser	130.000 mm
D9	Durchmesser max.	55.000 mm
N	Schraubenanzahl	4.000
GEWINDE	Nenn Durchmesser der Schraube metrisch	12.000 mm
D2	Durchmesser für Schrauben	14.000 mm
GEWB	Gewicht Form B (7.85 Kg/dm³)	2.440 kg
GEWT	Gewicht Form T (7.85 Kg/dm³)	2.480 kg

Voransicht für Flansch DIN 2527 T 65 ND 6





- **When calling up the PARTcommunity seamless site the path of a project has to be included (info-parameter)**
- **The call-up can contain in addition a list of variables (varset-parameter)**
- **If an additional email address is delivered the preview of the delivered varset is automatically re-calculated**
- **http://supplier-demo.beta.partcommunity.com/PARTcommunityPortal/faces/AllInOne?info=din_standards/anlagenbau/blindflansche/din_2527_nd_6.prj&varset={FORM=T}&email=s.waldner@cadenas.de**



PARTcommunity seamless Expansions

eCATALOG SOLUTIONS | PART COMMUNITY

**DIE VERTIKALEN
MARKTPLÄTZE**

➤ **The following expansions are planned**

- Expanding the layouts
- Order by download
- Manual update of the preview
- Deliver address data
- Registration formular





- **To use the full function range of PARTcommunity 2.0 portals the following plugins have to be installed**
 - ActiveX Viewer for 3D previews
 - Java for 2D views and 3D for non MS browsers
 - Flash for 2D sketcher
 - Adobe Reader for PDF 3D

- **Some of these plugins can only be installed with administration rights that a standard user does not have**

- **At this point IT has to intervene, which often causes a decrease in the acceptance of the portal**

- **Even users that have administrator rights are aggravated since the installation of the plugin causes a lot of time**



Plugin free site
New technologies

eCATALOG SOLUTIONS | PART COMMUNITY

**DIE VERTIKALEN
MARKTPLÄTZE**

- **With PARTcommunity 2.1 the focus is on new technologies like HTML5 and WebGL, for instance, to decrease the number of plugins**
- **HTML5 runs on all non microsoft browsers and in IE form version**
- **WebGL is not supported by all non microsoft browsers**





Plugin free site
New technologies

eCATALOG SOLUTIONS | PART COMMUNITY

**DIE VERTIKALEN
MARKTPLÄTZE**

- **In the current version all 2D dimensioning views and the 2D sketcher are already converted to HTML 5**





Plugin free site

Dimensioning view

Voransicht CAD MODELL

Vorschau Animation Maßbild 3D-PDF

Dies ist ein vorgeneriertes Standard Maßbild, das sich von Ihrer Auswahl unterscheiden kann.

Voransicht ausblenden
Größe: 100x100
Vorderansicht

90°

2x45°

L2/2

L3

L1

ØD1

ØD2

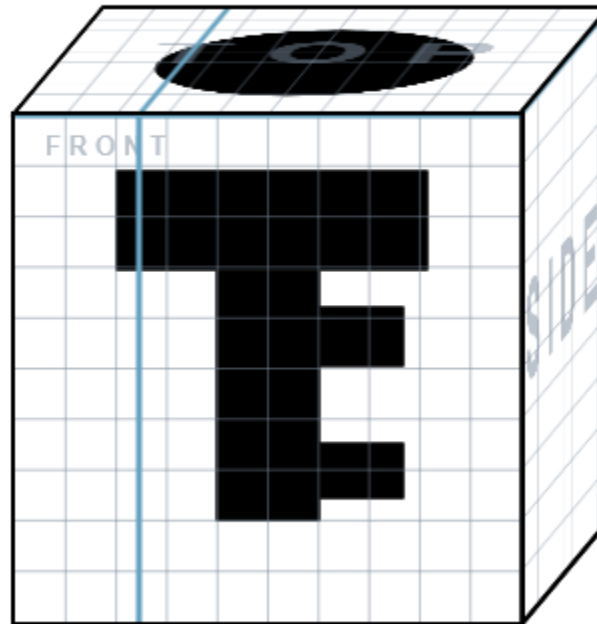
3D-Modell

1 2



Plugin free site 2D Sketcher

Skizzen



Suchen



- **Currently a WebGL viewer is being developed**
- **It is planned that the user can choose for himself which technology he would like for the 3D previews**
- **The portal provider sets the standard for the following available technologies:**
 - Natives plugin
 - Java viewer
 - WebGL
 - Animated GIF
 - 3D PDF
- **The portal user can choose for himself which of the technologies he prefers**



- **PARTcommunity 2.1 accesses search indices of PARTsolutions 9.0.5 zu**
- **This way it is possible to find variable values, for example order numbers, also with the full-text search**
- **This was previously only possible with the variable search**
- **The search results are now also filtered according to the full-text search, only tabular lines are shown that really belong to the search term**



Search

Combination fulltext and variable search

eCATALOG SOLUTIONS | PART COMMUNITY

DIE VERTIKALEN
MARKTPLÄTZE

- **The full-text search can now be combined with the variable search**
- **This way it is possible to further restrict search results to the requirements**
- **The following search terms are possible, for instance**
 - cylinder hub > 100
Full-text search for **cylinder** and variable search for **hub > 100**
 - Screw L=10 D=5
Full-text search for **screw** and variable search for **L=10** and **D=5**





Search

Combination full-text- and variable search

Suche nach CAD MODELLEN

Volltext Variablen Geometrisch 3D Skizze 2D

Suchkriterien

Suchtext: schraube L=10 D=5

Suchen

Suche nach CAD MODELLEN

Volltext Variablen Geometrisch 3D Skizze 2D

Suchergebnisse für schraube L=10 D=5

Suche verfeinern

58 hits

- DIN 316 - Flügelschrauben - DIN Standards -
- DIN 478 - Vierkantschrauben mit Bund - DIN Standards -
- DIN 22424 A - Dreikantschrauben, Form A - DIN Standards -
- DIN 927 - Zapfenschrauben mit Schlitz - DIN Standards -
- DIN 34817 - Schweißschrauben mit metrischem Gewinde - DIN Standards -

Kernansatz

Variablen



Flügelschraube DIN 316 M5x10

Name	Beschreibung	Wert
IDNR	Identifikationsnummer	
D	Gewindenenddurchmesser	5.000 mm
D3	Gewindekerndurchmesser	4.019 mm
P	Gewindesteigung	0.800 mm
DIN962THREAD	DIN 962 Gewinde	Rechtsgewinde
L	Nennlänge	10.000 mm



- **In PARTcommunity 2.0 only the user management could be integrated directly into the portal**
- **In PARTcommunity 2.1 the statistic tool and the management of email exclusion lists can now be integrated into the portal**
- **This way all management tools are available on one site and with one account**
- **Changes on the exclusion lists are instantly active on the portal**



Portal management

New tools

eCATALOG SOLUTIONS | PART COMMUNITY

DIE VERTIKALEN
MARKTPLÄTZE

DEMO

Willkommen

CAD Modelle

Administration

User Management

Users >

User management

+ New user

Manage users

Import users

Portal lock management

Manage portal locks

Statistic

Statistic >

Statistics

Create statistics

Templates

Manage templates

Exclusions/Inclusions

Manage catalog exclusions/inclusions >

Email exclusion/inclusion management

Manage catalogs

Manage master email exclusions/inclusions





Portal management

External orderers and 1.9 Portals

eCATALOG SOLUTIONS | PART COMMUNITY

DIE VERTIKALEN
MARKTPLÄTZE

- For external orders and 1.9 portals the <http://config.partcommunity.com> site was installed
- The integration of the 1.9 portals to the new management of the email exclusion list is currently in development
- Accesses to this site are released by the project manager



PARTcommunity 2.x Further developments

- **2D combination views**
- **Display of expired parts (End of Life)**
- **Dynamic reload of catalog changes**



- **2D views were previously delivered only as individual files**
- **Per portal you can determine how many views should be generated**
- **With the combination views the user can choose for himself if he still wants all views as single files or as combination views**
- **At the same time he has the choice between different standard views (DIN, ANSI) or a manufacturer specific template which is filed in the catalog**



- **In the electronic product catalogs an expiration date can be determined for projects**
- **The following information can be filed:**
 - Expiration date
 - Information x days before expiration
 - If continued use of the part is still possible after expiration
 - Spare parts
- **In the future this information will also be shown in PARTcommunity**



➤ Overview of information about expired parts

- Part cancelled



- Valid spare part is filed



- Expired and spare part is valid





➤ Display when selecting an expired part

Ersatzteilauswahl Schließen

Abgelaufenes Teil

Dieses Teil ist am 04.02.2013 abgelaufen und darf nicht mehr verwendet werden.

Ersatzteil(e)

Dieses Teil wurde durch folgende(s) Teil(e) ersetzt:

Vorschau	Description
	DIN 7984 - Zylinderschrauben mit Innensechskant und niedrigem Kopf

Ersatzteilauswahl Schließen

Abgelaufenes Teil

Dieses Teil ist am 01.01.2013 abgelaufen, darf aber weiterhin verwendet werden

Vorschau	Description
	DIN 920 - Flachkopfschrauben mit Schlitz und kleinem Kopf

Ersatzteil(e)

Dieses Teil wurde durch folgende(s) Teil(e) ersetzt:

Vorschau	Description
	DIN 7985 - Linsenschrauben mit Kreuzschlitz H



- **Catalog changes are currently only reloaded in the following cycles of PARTcommunity:**
 - Live: every 24h
 - QA: every 6h

- **In the future the data will be reloaded dynamically, this way changes of catalog data are available within one hour on Live and QA portals**



- **Change to a new framework to display PARTcommunity websites:
PrimeFaces**
- **Modern components**
- **Render more quickly in browsers**
- **Page size is minimized, this way less data has to be transferred
from the server to the client
=> Page display is accelerated**



- **For smartphones and tabletApps a new backend was developed for delivering catalog data**
- **Based on JSON API**
- **Available for external assistants and configurators in the course of the year**
- **Future basis for für PARTsolutions and PARTcommunity**
- **This backend helps to display a page for browsing a catalog by simple means**



Thank **you** very much for your attention

QUESTIONS?

FEEDBACK?

Dipl.-Ing. (BA) Stefan Waldner

Phone.: +49 (0) 821 2 58 58 0 - 0

E-Mail: s.waldner@cadenas.de



Property, Copyright and Disclaimer

This document and all information it contains are the property of the CADENAS AG. Delivery of this document or display of its content does not create a right to the intellectual property. This document may not be copied or made available to third parties without the written consent of the CADENAS AG. This document and its content may only be used for the purposes they were intended for.

All statements made in this document do not constitute an offer. They were made bona fide on the basis of specified assumptions. If the reason for the statements are not indicated, the CADENAS AG will gladly explain the statements to you.